

Comfort Flow™

Made of durable nitrile rubber foam

Grease/oil proof & chemical resistant

Superior anti-fatigue properties

Anti-microbially treated for odor control

Lightweight, easy to lift, roll, and clean

Beveled edges allow carts to easily roll over

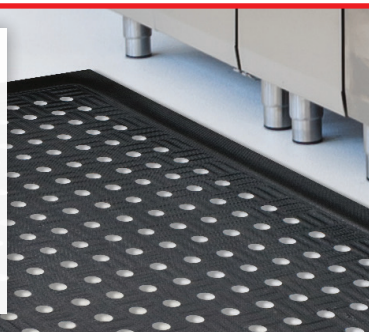
100% customer satisfaction guaranteed

Size	MSC Part #
2' x 3'	28706091
3' x 5'	28706398
3' x 9'	28707032
4' x 6'	28706331

Another popular restaurant mat is the

Cushion Station™

An anti-microbially treated anti-fatigue mat constructed with durable nitrile foam designed to withstand grease, oil, and chemicals.



Size*	MSC Part #
2' x 3.2'	28707719
3.2' x 5.3'	28706406
3' x 12.3'	28707735
4' x 5.9'	28707099

*More sizes available, visit mamatting.com/msc or call your **M+A Matting Representative**.